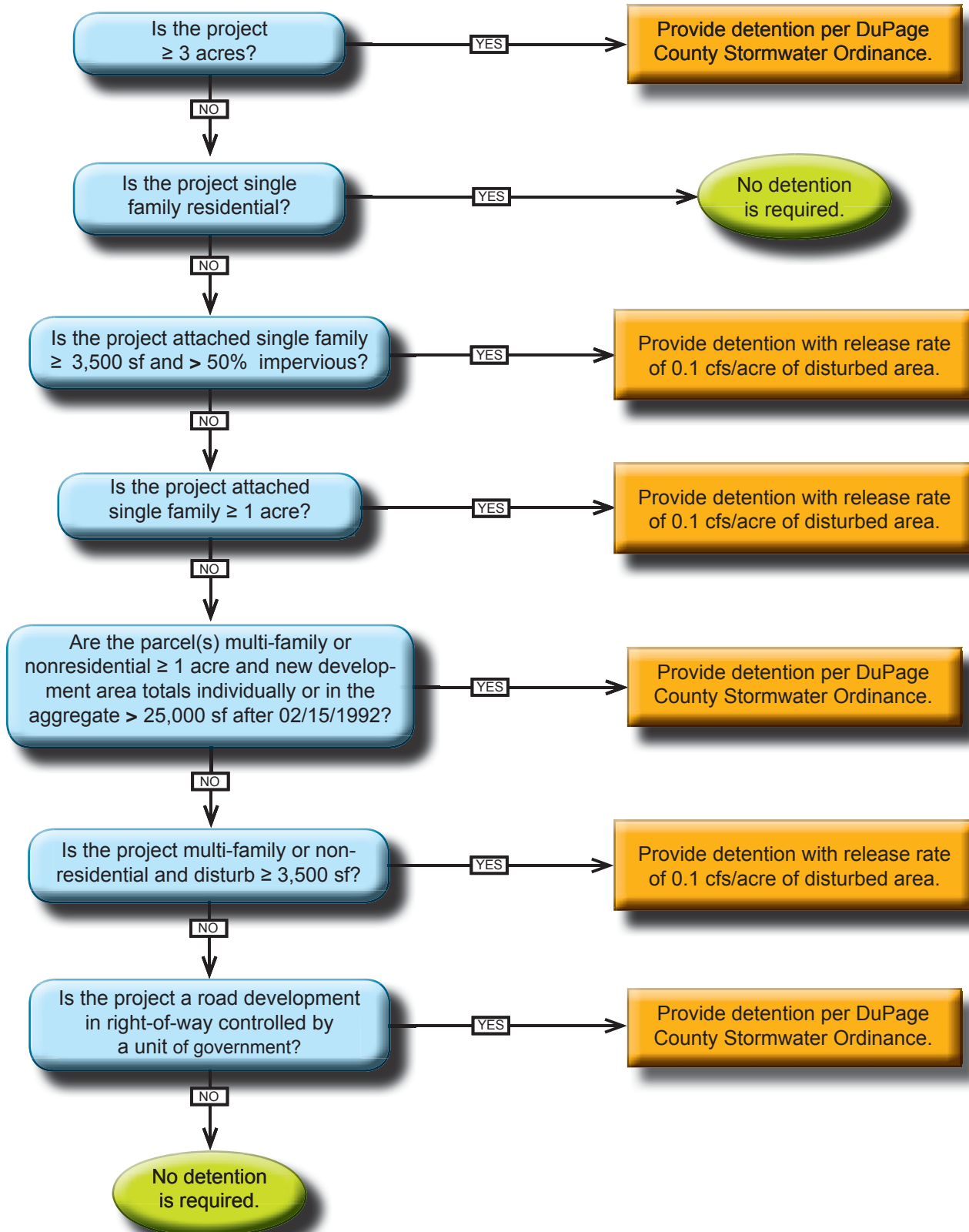


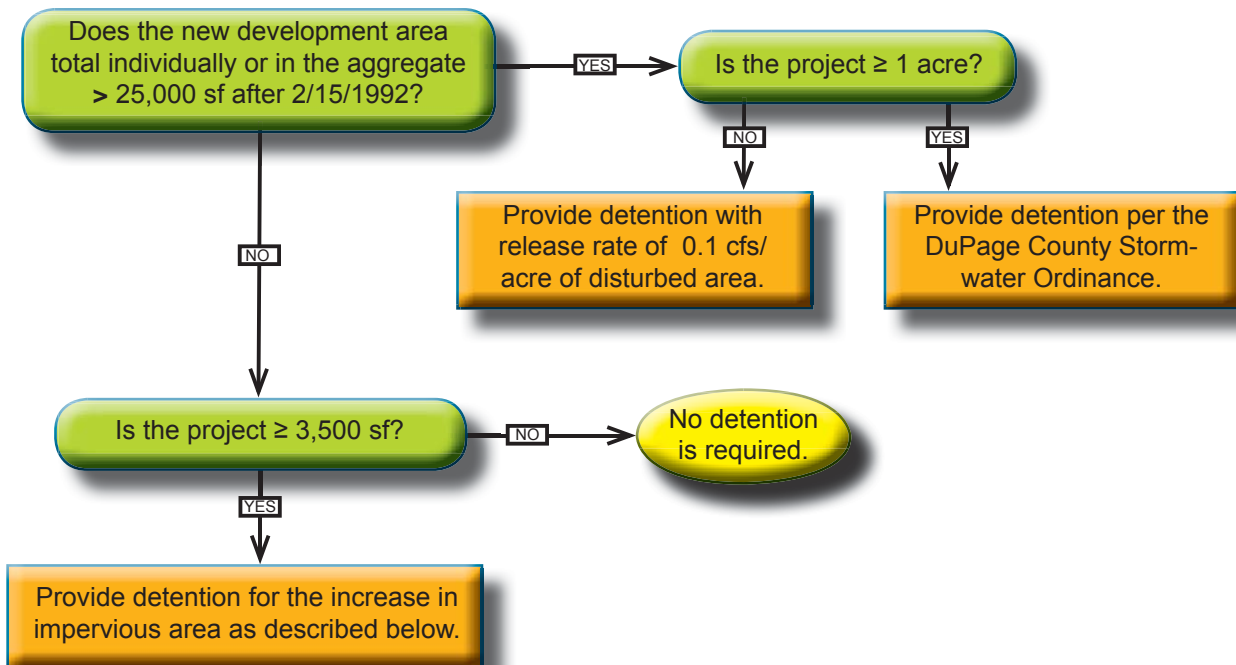
## VILLAGE OF GLEN ELLYN-STORMWATER PERMIT REQUIREMENTS-DEVELOPMENT

Any activity, excavation or fill, alteration, subdivision, change in land use, or practice, undertaken by private or public entities that affects the discharge of stormwater; or substantial improvement to any portion of a building in the floodplain. The term "development" does not include maintenance of stormwater facilities. It does, however, include the substantial redevelopment of a site by the removal of its principal building, as defined by the Glen Ellyn zoning code.



## VILLAGE OF GLEN ELLYN-STORMWATER PERMIT REQUIREMENTS-REDEVELOPMENT

Any activity, excavation or fill, alteration, or practice affecting the discharge of stormwater that is undertaken by private or public entities on land previously developed by an approved structure resulting in an addition to said approved structure. The term "redevelopment" does not include any activity resulting in the removal of the principal building, as defined in the Glen Ellyn zoning code, on a previously developed parcel. See also Development.



**Section 15-114-15a** For sites having no total site stormwater runoff storage facility on February 15, 1992, the required storage volume shall be equal to the increase in the site runoff storage volume. This volume shall be calculated using the TR-20 method of determining the runoff excess and the site time of concentration.

**Section 15-114-15b** For sites having a site runoff storage facility on February 15, 1992, the storage volume of said facility shall be increased by incremental increase in volume resulting by calculating the storage volume required before and after the new development

**Section 15-114-15c** The site runoff storage need not exceed that required under Section 15-111.3.

**Section 15-114-15d** If the calculated site runoff storage for new development in the aggregate after February 15, 1992, is less than 500 cubic feet, such site runoff storage need not be provided. However, site runoff shall be mitigated by best management practices as set from the in Section 15-113.11 and .12 of this Ordinance.

### NOTES REGARDING THE VILLAGE OF GLEN ELLYN DETENTION VARIANCE FEE PROGRAM

For all parcels with a development area greater than 3,500 square feet in area that are tributary to a stormwater management facility that meets or exceeds the site runoff storage requirements of the countywide ordinance, but would be required to provide site runoff storage if such facility did not exist, shall not have a site runoff storage release rate greater than the peak runoff rate from the site undeveloped with a runoff curve number of 74 for a twenty-four (24) hour duration storm with a twenty percent (20%) probability of occurrence in any one year as specified by Illinois State Water Survey Bulletin 70 northeast sectional rainfall. The same Huff rainfall distribution shall be used to determine the allowable peak runoff rate and the site runoff storage volume required for the one percent (1%) probability storm. The runoff storage volume need not exceed that required under section 15-111.3 of the ordinance.