

## Village of Glen Ellyn

Contact: Grant Paplauskas

Phone Number: 224-290-4634

Email: [gpaplauskas@glenellyn.org](mailto:gpaplauskas@glenellyn.org)

## Glen Ellyn Park District

Contact: Dave Harris

Phone Number: 630-942-7255

Email: [dharris@gepark.org](mailto:dharris@gepark.org)



FOR IMMEDIATE RELEASE  
October 3, 2022

## VILLAGE OF GLEN ELLYN AND GLEN ELLYN PARK DISTRICT PARTNER TO IMPROVE PANFISH PARK

**Glen Ellyn, IL** – As part of the Village of Glen Ellyn and the Glen Ellyn Park District's collaboration to enhance and improve recreation opportunities within Glen Ellyn, a preliminary conceptual design to refurbish Panfish Park is underway. In response to community-driven feedback, the investment would improve the look and feel, increase amenities, and redevelop the playground.



Glen Ellyn Park District Board President Alex Durham (left) and Village of Glen Ellyn Board President Mark Senak (right) in front of Panfish Park playground.

The agreement is a component of the Village and Park District's partnership to purchase and develop the former US Bank property, located at 453 Forest Avenue in Downtown Glen Ellyn, into a multi-use event area and open-space park.

The scope of the Panfish Park enhancements includes renovating the playground area, improving the loop walking trail, introducing more natural areas and trees, removing invasive plants and dead trees, and adding new signage and site furniture.

The existing playground, previously installed in 1996, will be replaced with an ADA-accessible playground with fixtures geared toward children ages 2-5 and 5-12. An open-air shelter will also be built.

Minor realignments will be added to the loop walking trail and the hierarchy of the trails will be improved with an emphasis on the outer half-mile. Limestone will continue to be used primarily with concrete in key washout areas as needed.

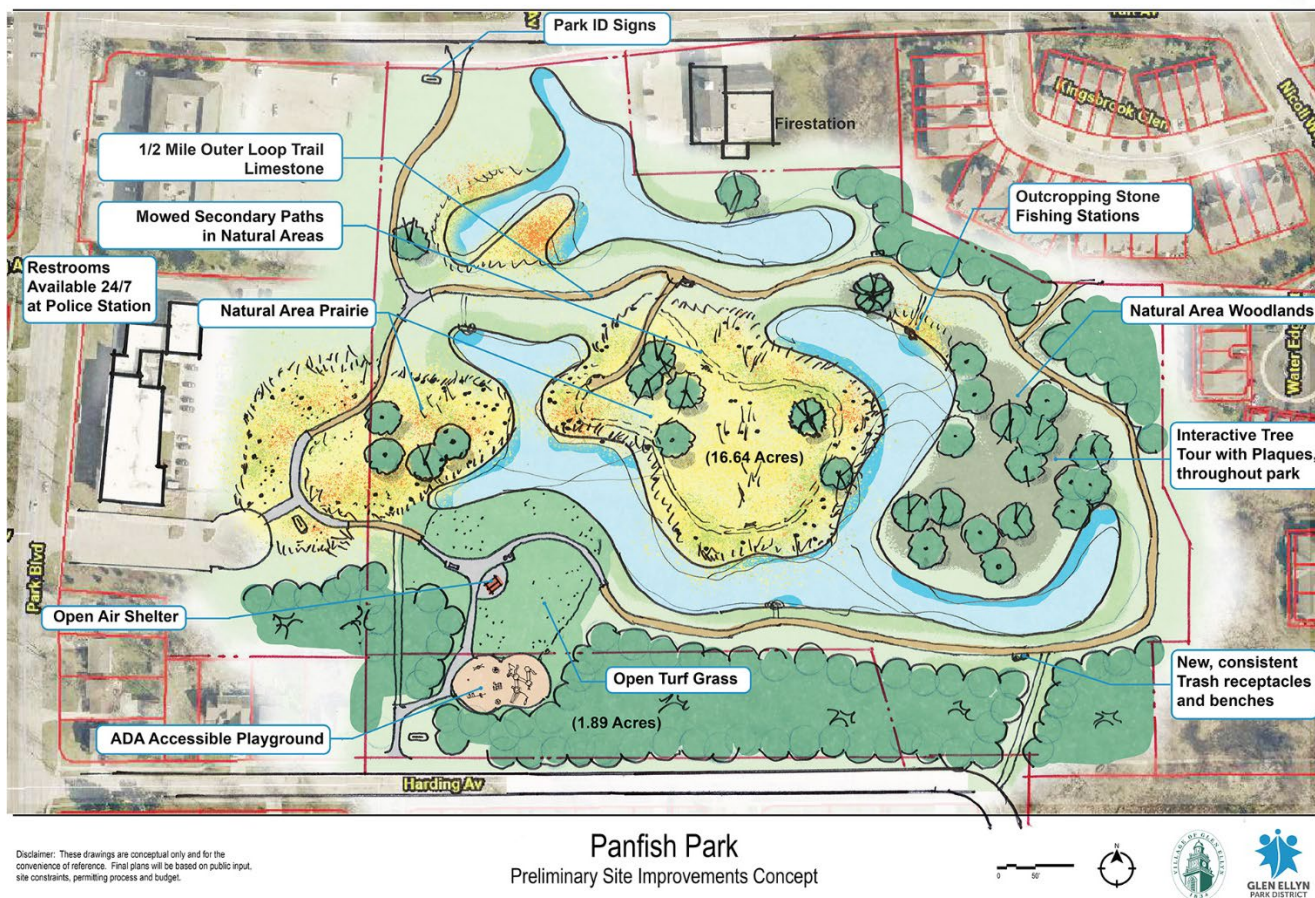
An overall natural area plan will be drafted that will include an interactive tree tour with signage installed on legacy trees throughout the park.

Renovations for Panfish Park are expected to start in late 2023 or 2024, with public engagement opportunities beginning next year.

The Park District's early conceptual plans to transform the former US Bank property are to include 9,000 square feet of greenspace and expand the existing Prairie Path Park into a dynamic open space within the heart of Glen Ellyn's Downtown. There is also potential for a permanent stage and support facility.

The site will create a “front yard” for commuters, Prairie Path users, Downtown residents, and the entire community. The project will fulfill an initiative driven by the Village’s Downtown Plan and Comprehensive Plans, which call for the addition of green space within the Downtown area. The development of the site will also serve as a catalyst for improvements to adjacent properties and bring new events to the area. The project is expected to break ground in 2024 or 2025, depending upon the design, public engagement, and permit process.

For questions regarding these projects, please contact Nathan Troia, Superintendent of Planning and Natural Resources with the Glen Ellyn Park District, at [ntroia@gepark.org](mailto:ntroia@gepark.org).



**To learn more about the project as it develops, please visit  
[www.gepark.org](http://www.gepark.org) or [www.glenellyn.org](http://www.glenellyn.org)**

###